



North Liberty Community Food and Clothing Pantry

Program Summary Calendar Year 2005

Our mission:

The North Liberty Community Food and Clothing Pantry exists to provide food and clothing in an accessible, non-judgmental, and caring environment. We also provide opportunities for the community to share its resources and demonstrate concern for those in need.

Calendar year 2005:

The pantry has seen dramatic changes during 2005. We are proud to have served many more families this year. We have accommodated increases in use of the pantry and shortages in food and funds creatively and successfully. We continue to focus on providing a warm and welcoming place for those who need our services and on involving the community in serving our neighbors.

The pantry served 1066 people or 288 families in 2005. Families served varied greatly in their makeup and use of the pantry. Families ranged in size from 1 to 11 people, with an average size of 3.6 people. Families with children accounted for 74% of those served. Individuals varied in age from less than a year to 75 (see Figure 1). These families made a total of 1781 visits to the pantry. There was an average of six visits by each family with families visiting as few as one time and as many as 43 times. The average length of time that a family accessed resources from the pantry was 4.6 months. The number of visits per month grew steadily to a peak of 207 in August and then declined during the remaining months of 2005 (see Figure 2).

The pantry gave out more than 18 tons of food in 2005. This food came from donations, food drives, discounted purchases from the HACAP Food Reservoir in Cedar Rapids, and purchases from retailers. Currently 60% of food dollars are spent at HACAP, which provides quality food at a minimal cost, enabling the pantry to maximize the value of contributions.

We also gave out over 3600 clothing items in 2005. All clothing was donated by individuals and businesses in the community. An emphasis is placed on children's, adult-work, and maternity clothing.

The pantry is funded through grants, fundraisers, and donations from individuals, groups, and businesses; all of which are primarily from the North Liberty area. The local Methodist church provides in-kind contributions of space, utilities, and staff support. Funding for the pantry in 2005 consisted of two grants totaling \$2261, fundraisers totaling \$551, and donations totaling \$4043 (see Figure 3). Of the money expended during 2005, 64% was spent on food, 10% on equipment, 10% on a practicum stipend, 10% on volunteer awards and incentives, and 6% on supplies.

We have also encouraged the involvement of the community through volunteer opportunities, fundraising, and food drives. The program was run entirely by volunteers. We had 70 regular volunteers, who contributed over 2800 hours in 2005. In addition, another 50-75 volunteers participated in special activities, such as food drives and construction projects. Volunteers staffed the three pantry shifts each week, collected food, stocked the pantry, and provided administrative support. Program and policy activities were accomplished by four teams that met monthly.

We had financial and in-kind donations from 34 local businesses and service groups. We launched the annual "Neighborhood Challenge Food Drive" in which neighborhoods competed to see which could raise the most food. We sponsored a "Teen Band Challenge" using food items as admission to the concert. We worked with the North Liberty Family Resource Center to provide reciprocal referrals and coordinated holiday meal boxes.

Current need:

North Liberty has a substantial number of families in need. Many programs that provide food for families, ours included, follow federal guidelines in serving primarily families with an income under 185% of the federal poverty level. This means that for a family of four, their income would be under \$29,025 per year (see Figure 4). In 2000 North Liberty had 862 residents, or approximately 358 families, at or below 185% of poverty (see Figure 5). There were only 28 families in the city on public assistance in 2000, so it is clear that the majority of these families are among the working poor, elderly, or disabled. Considering the 40% increase in population in the last five years (see Figure 6), we estimate that there are at least 500 families at or below 185% of poverty in North Liberty alone. In addition, there are several rural communities in northern Johnson County that are also growing rapidly for whom we are the closest food pantry.

Future plans:

As the pantry begins 2006, we anticipate several changes. The pantry is becoming active in the newly initiated North Liberty Resource Network. We expect continued growth in the use of the pantry, and we have plans to both improve our programming to meet increasing needs and expand the services provided.

We anticipate the need for additional food purchases and are working to secure funding to cover an expanded budget for food (see Figure 7). We also have plans to seek funding for the purchase of clothing items and equipment when needed (see Figure 8).

We are planning to add paid staff to coordinate the pantry. Program administration is currently facilitated by a coordinator, who is a volunteer, and two graduate-level practicum students. The addition of paid staff will increase consistency and continuity for the program and allow for expanded services.

We are continuing to recruit and train new volunteers. In addition, we are initiating in-service trainings for existing volunteers. This will help volunteers remain current on information and policies and build community within the volunteer team.

We are developing plans to expand the facility. We anticipate the need for more space for storage, food and clothing distribution, and staff. We would also like to be able to provide other services for families, including space for other social service agencies to provide occasional on-site programming.

We are working with both the North Liberty Family Resource Center and the Crisis Center Food Bank to provide better coverage of our area, both for the basic services of food and clothing, and for help with other needs that families face. We are working to establish connections with churches in North Liberty and also in smaller communities in the area in order to increase support, community involvement, and awareness of services.

Our history:

The pantry is an outreach ministry of the North Liberty First United Methodist Church, but the service area and support are community wide. The primary focus is on service to residents of the North Liberty area, but we also serve other Johnson County families. The pantry was created 20 years ago as a response to requests from families in need in our community. Until 2004 the pantry was a small project that served 15 to 20 families who asked for help each month. In response to a growing community and growing need the pantry was expanded in 2004 and has seen a rapid growth has been a result of three factors: increasing awareness of the pantry, increasing population growth in North Liberty, and increasing economic need.

In 2004 we constructed a new building, and in June we moved the pantry from a large closet in the church to a 15'x35' room in the new building. This new space allowed us to store enough food to meet the need at that point and provided space for an expanded clothing selection. The pantry is now open to the public three days each week for a total of eight hours. Anyone in Johnson County can access resources once a week during operating hours to receive food and clothing. There are no restrictions on families that can receive food and clothing, with the exception of government commodities which cannot be given to families above 185% of poverty.

**Figure 1. Age of individuals accessing the pantry
Calendar year 2005**

Age in years	Number	Percent
0-5	206	21%
6-17	341	34%
18-29	157	16%
30-61	273	27%
62-75	20	2%

Figure 2. 2005 Visits

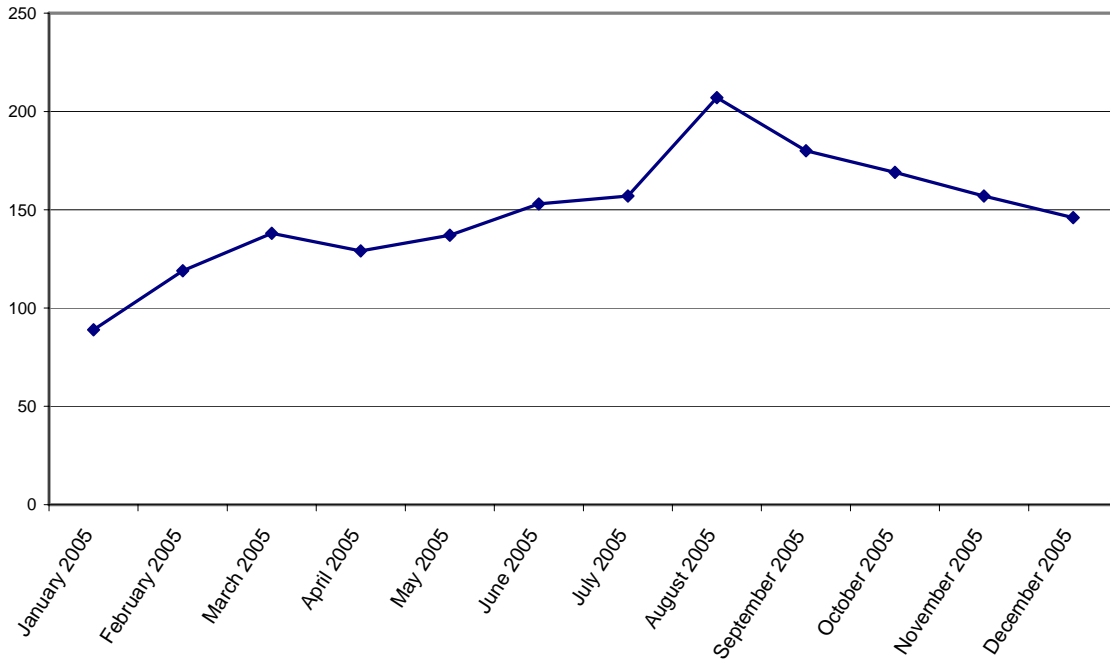


Figure 3. Sources of funding for food and equipment

Source	2005	2006 (anticipated)
Grants		
UMC annual conf.	\$1,000	\$750
FEMA	\$1,261	\$1,200
Individual donations		
Church	\$1,958	\$1,500
Community	\$750	\$900
Group donations		
Service groups	\$50	\$1,000
Other churches	\$226	\$1,000
Businesses	\$560	\$1,000
Government		
North Liberty	\$0	\$2,500
Fundraisers	\$511	\$2,000
Church budget	\$500	\$1,000
Total	\$6,816	\$12,050

**Figure 4. 2005 Health and Human Services
Poverty Guidelines**

Persons in Family Unit	Poverty level	185% of poverty
1	\$ 9,570	\$17,705
2	12,830	23,736
3	16,090	29,767
4	19,350	35,798
5	22,610	41,829
6	25,870	47,860
7	29,130	53,891
8	32,390	59,922
For each additional person, add	3,260	6,031

**Figure 5. Percent of poverty level income for individuals in North Liberty
2000 U. S. Census figures**

Percentage of poverty level	Individuals	Cumulative individuals
0% to 50%	167	167
50% to 99%	130	297
100% to 149%	228	525
150% to 184%	337	862
Over 185%	4,519	5,381

**Figure 6. Population of North Liberty
2000-2004 (U. S. Census figures)**

Date	Population
July 1, 2004 (estimate)	7,638
July 1, 2003 (estimate)	6,866
July 1, 2002 (estimate)	6,274
July 1, 2001 (estimate)	5,966
July 1, 2000 (estimate)	5,494
April 1, 2000 (Census 2000)	5,367

Figure 7. Food costs

Food Source	2005	2006 (anticipated)
HACAP	\$1,849	\$3,150
Retail	\$1,262	\$3,100
Wholesale	\$0	\$1,200
Total	\$3,111	\$7,450

Figure 8. Equipment and materials costs

Equipment and materials	2005	2006 (anticipated)
Equipment	\$472	\$1,200
Supplies	\$298	\$400
Practicum stipend	\$500	\$1,000
Volunteer incentives	\$464	\$500
Total	\$1,270	\$2,600