



North Liberty Community Food and Clothing Pantry 2008 Program Summary

Our mission:

The North Liberty Community Food and Clothing Pantry's mission is to engage our community in feeding and clothing our neighbors.

Accomplishments in 2008:

Services provided by the Pantry have grown in 2008. Service growth has prompted policy changes and increases in budget and staffing. A half-time Pantry Coordinator was added in January 2008 who is the only paid staff person. The Pantry has increased its volunteer base to 90 regular volunteers. Pantry services are provided in a respectful manner based on a "Neighbors Helping Neighbors" philosophy. The Pantry narrowed the service area to North Liberty and rural Johnson County beginning in September 2007.

Families

The Pantry has served 423 families in 2008. Visits to the Pantry have increased by 8% in 2008. A wide variety of families and individuals have been served by the pantry. Individuals have varied in age from less than a year to 87 years of age. Families with children have accounted for 60% of those served. Results from the Pantry's 2008 family survey indicate that 74% of families are white, 18% black, 6% Latino, and 2% mixed race. In 68% of families at least one person is employed. In 34% at least one person is disabled. These families and individuals made a total of 3,456 visits to the Pantry.

The Pantry has maintained the quality of interaction with families. The family survey conducted in 2008 has shown that families continue to be happy with services. Families were particularly pleased with the friendly helpful attitude of volunteers, the opportunity to shop, and the convenience of a Pantry close to their home.

Services

The Pantry distributed 92,432 pounds of food and nearly 8000 pieces of clothing. Most clothing items were donated; however, drives have been conducted to provide socks, underwear, and coats to the children served by the Pantry and children within Johnson County. The community has supported clothing purchases through individual, business, and church donations totaling \$8500 for these special programs.

The Pantry's shopping process has been well received by families, volunteers, and members of the community. This process has allowed families to choose their own food. All families in the service area have been encouraged to shop. Limiting the Pantry's service area has enhanced services for the families served. It also has increased the sense of community within the volunteers and families since most families live in the immediate area.

Community Support

The community has been very supportive of the Pantry in 2008, and the Pantry's visibility has increased. The Pantry has had three well publicized fundraising events. Direct mail requests to businesses have been increased. The Pantry has had public service announcements on local television as well as general press coverage.

The Pantry has received community support through food drives. In 2008, 30,635 pounds of food was received through food drives. The remaining 62,800 pounds of food

distributed by the pantry was purchased, primarily from the HACAP Food Reservoir. Cost of the purchased food was \$9,309. Food expenditures have increased over 20% from 2007, but the Pantry's food costs per pound have remained the same. Food was purchased at HACAP at a greatly reduced price. The estimated value of purchased food is over \$100,000.

The Pantry has collaborated with the North Liberty Family Resource Center through mutual referrals and sharing of food and clothing resources. Participation in North Liberty Unity Coalition has continued in order to maintain communication with key individuals in the community.

The Pantry has received increased support in the community in order to manage increased need and resulting expenses. The Pantry has increased paid staff from none to one half-time employee and increased clothing purchases to include socks and underwear as well as coats. Overall costs per visit and per family increased significantly due to these necessary advances in the programming at the Pantry, but community support allows the Pantry to serve individuals with need with improved services through these additions to the program.

Internal Operations

The Pantry Board of Directors meets monthly to set direction for the Pantry. The Board is two years old and is an asset to the Pantry infrastructure. The Pantry also has six committees that are in charge of Pantry operations. The Pantry Coordinator works with the Board, committees, and volunteers to coordinate the activities of the Pantry. The addition of a paid staff person increases consistency and continuity for the program.

The Pantry has maintained an efficient budget. Fundraising efforts increased cash flows by more than 50%, however, expenses also more than doubled. Resourceful use of purchasing power has allowed the pantry to purchase the necessary items to maintain and grow the program with the needs of the community. The largest increase in expenditures was due to the necessary addition of a half-time paid coordinator.

Program Overview:

The Pantry is an outreach ministry of the North Liberty First United Methodist Church, but the service area and support are communitywide. The Pantry was created in 1985 as a response to requests from families in need in the community. Until 2004 the Pantry was a small project that served 15 to 20 families who asked for help each month. In response to a growing community and growing need, the Pantry was expanded in 2004 and has seen rapid growth as a result of three factors: increasing awareness of the Pantry, increasing population growth in North Liberty, and increasing economic need. Strong leadership and commitment have been important to provide for the successful growth of the Pantry.

The Pantry is now open to the public three days each week for a total of 12 hours. Families in the service area can come once a week during those hours to receive food and clothing. There are no restrictions on families who can receive food and clothing, with the exception of government commodities, which cannot be given to families above 185% of poverty. The Pantry has provided thoughtful and caring service to the families served and has consistently drawn praise from those families, as well as from groups and individuals who assist the Pantry.

The 90 regular volunteers have contributed over 3,200 hours in the last year. Volunteers have staffed the five Pantry shifts each week and have been involved in collecting food, stocking the Pantry, and doing administrative and support work. In addition, another 50-75 volunteers participated in special activities, such as food drives and fundraisers.

The Pantry involves families who have been provided assistance. The Pantry has had three consumer volunteers in 2008. There has also been one consumer on the Pantry Board. Families bring clothing donations to the Pantry, and several have helped volunteers on an informal basis when they come to the Pantry.

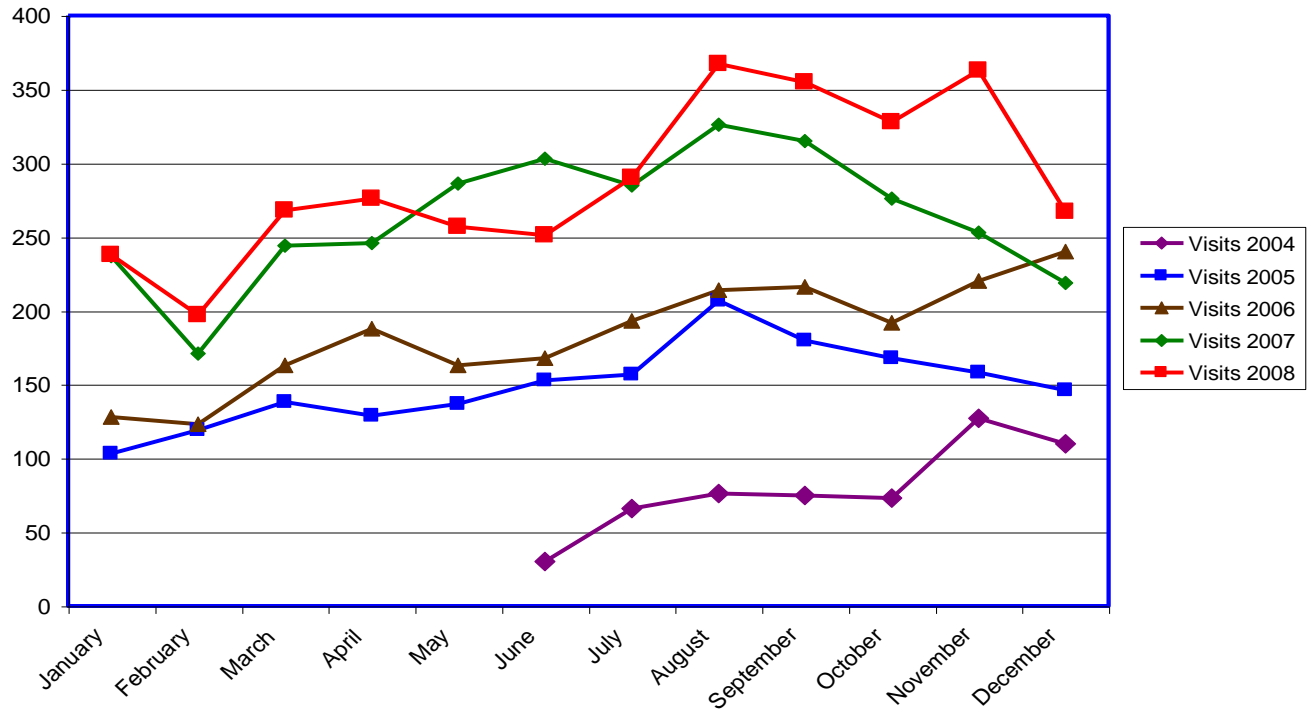
Future plans:

North Liberty is a rapidly growing community. U S Census figures show an increase from 5,367 residents in 2000 to 8,808 in 2005, and current estimates show the population at over 11,000. A substantial number of families are in economic need. Projections based on 2000 poverty statistics indicate that there are nearly 500 residents whose incomes are below the poverty level and over 1400 residents who are below 185% of poverty, a level of income of \$38,000 annually for a family of four.

North Liberty has affordable housing in the form of subsidized apartments and mobile homes. However, there is very little assistance for low-income families. The North Liberty Family Resource Center, a WIC representative, and the Pantry are the only organizations located in North Liberty that specifically serve low-income residents. All other services must be accessed in Iowa City. This situation is made particularly difficult by the very limited public transportation between the two cities. Many of the families who come to the Pantry do not have reliable transportation. In our family survey, 36% of respondents indicated that they walk or get a ride to the Pantry.

The Pantry is working to serve all of the families in need in the community while obtaining enough resources to be able to serve everyone well. In 2009 the Pantry will: a) continue to make adjustments to expand our capacity; b) seek funding for additional on-site storage until there is a building expansion; and c) actively seek additional funding for staff. The Pantry continues to appreciate the staff funding support from the community and the First United Methodist Church.

Visits to the Pantry



Cost of services

Service	2007	2008
Food costs per pound	\$0.10	\$0.10
Food costs per visit	\$2.34	\$2.69
Clothing costs per item	\$0.08	\$1.07
Total cost per visit	\$4.55	\$11.65
Total cost per family	\$33.48	\$95.22

Sources of funding

Source	2007	2008
Business Contributions	\$908.00	\$5,242.00
Church Contributions	\$2,948.53	\$2,842.10
Church Contributions (salary)	\$0.00	\$6,670.65
Fundraisers	\$1,412.00	\$2,373.50
Local Government Contributions	\$5,000.00	\$8,000.00
Grants	\$4,412.00	\$7,010.00
Group Contributions	\$3,300.00	\$3,200.00
Individual Contributions		
Outside Church	\$818.30	\$4,438.41
Within Church	\$2,612.00	\$1,245.18
Miscellaneous	\$21.57	\$31.00
Total	\$21,432.40	\$41,052.84

Expenditures

Source	2007	2008
Architect	\$0.00	\$3,000.00
Clothing	\$625.06	\$8,554.82
Employment	\$0.00	\$306.58
Equipment Purchase	\$464.04	\$531.28
Equipment Rental	\$434.19	\$1,106.75
Facilities Rental	\$300.00	\$0.00
Food Supplies		
Food Retail	\$407.16	\$951.59
Food Wholesale	\$438.34	\$264.13
Food Bank	\$6,542.30	\$8,093.21
Fundraising Expense	\$0.00	\$958.88
Marketing	\$351.55	\$52.51
Meals and Entertainment	\$24.50	\$0.00
Office Supplies	\$0.00	\$813.94
Pantry Supplies	\$494.16	\$469.01
Postage and Delivery	\$171.80	\$47.58
Printing and Reproduction	\$350.00	\$0.00
Professional Fees	\$172.50	\$70.00
Salary	\$765.96	\$13,341.30
Stipend	\$0.00	\$500.00
Supplies – Building	\$171.77	\$0.00
Telephone	\$412.31	\$527.07
Training	\$1,608.43	\$70.00
Travel	\$278.76	\$0.00
Volunteer Support	\$317.50	\$619.64
Total	\$16,337.33	\$42,286.29