



North Liberty Community Pantry 2009 Program Summary

Our mission:

The mission of the North Liberty Community Pantry is to engage our community in feeding and clothing our neighbors.

Accomplishments in 2009:

The North Liberty Community Pantry experienced dramatic growth in the last year. The Pantry managed the growth in families, visits, and food distribution through the hard work of an active Board, a salaried half-time Pantry Coordinator, dedicated volunteers who operate the pantry, and generous contributions from our community.

More Families Were Served

The Pantry served 507 families in 2009, a 20% increase over 2008. Family visits to the pantry also increased 29% during this period to a total of 4454. Ages, race, and ethnicity varied greatly for individuals and families served. Ages varied from less than a year to 81 years of age, with children in the majority (65%) of families.

Results from the Pantry's 2009 Family Survey (FS) indicate that the majority of families are Euro American (80%), with fewer families who are African American (18%) and Native American (2%). Most (62%) families reported at least one person employed, and one person with a disability was reported in approximately one-fifth (18%) of families served.

The Pantry continues to maintain a high quality of interaction with families. Findings from the 2009 FS show that families continue to be happy with services. Families reported they were particularly pleased with the friendliness of the volunteers, the opportunity to choose their own food and clothing, and the Pantry being close to their home.

Services Provided Increased

The Pantry distributed 122,143 pounds of food, a 32% increase over 2008. Nearly 7500 pieces of clothing were distributed to families this past year. Most clothing items were donated; however, drives were conducted in 2009 to provide socks, underwear, and coats to the children served by the Pantry and other children within Johnson County.

The Pantry's shopping process remains well received by families, volunteers, and members of the community. All families served by the Pantry are encouraged to shop. This process provides the opportunity for families to choose their own food. The Pantry is an example for other pantries serving this adjoining geographical region. Our example acts as a stimulus to other pantries to consider modifying their distribution method to a "client choice" model.

The 2nd Annual Coat Distribution and 4th Annual Socks and Underwear Distribution were well attended by families in need. Businesses, individuals, and organizations supported these special programs through donations of coats, socks, and underwear as well as funds to purchase new items. Hundreds of children were served on the designated distribution day as well as additional children who were served through individual requests after the event.

Community Support Made Our Increased Service Possible

The community continued to be very supportive of the Pantry's "Neighbors Helping

Neighbors” philosophy in 2009. The Pantry received increased support from the community to manage increased need.

Several strategies were taken to communicate the needs of our neighbors to the North Liberty community in 2009, including a) the 1st Annual Stone Soup Supper Fundraiser, which was well attended by an estimated 100 guests; b) expansion of direct mail requests to businesses; c) submission of multiple articles in the local Newspaper; and d) our updated webpage that is frequently visited for information on volunteering, donations, and services provided by the Pantry. The Pantry received increasing financial support from a wider range of businesses, organizations, and individuals during the last year.

The Pantry also received community support through food drives. In 2009, nearly one third of all food distributed by the Pantry was donated. Organizations such as Table to Table, Panera, and Hy-vee donated food. Local individuals, businesses, churches, and organizations made significant donations to the pantry. The remaining 80,000 pounds of food distributed by the pantry was purchased, primarily from the HACAP Food Reservoir. Cost of the purchased food was over \$12,500. Food purchases at HACAP were made at a greatly reduced price.

The Pantry collaborated with other groups and agencies to meet needs of the families we serve. The pantry collaborated with the North Liberty Family Resource Center through mutual referrals and sharing of food and clothing resources. Participation in North Liberty Unity Coalition has continued in order to maintain communication with key individuals in the community. The Pantry is a founding member of the newly created Hunger Project committee. This countywide meeting provides an opportunity to share ideas about how to work together to meet the hunger needs of all individuals living in Johnson County.

Internal Operations

The Pantry Board of Directors meets monthly and sets direction for the Pantry through on-going activities and a five year Strategic Plan. The Board has become cohesive and efficient in the three years it has existed. Five committees that are in charge of pantry operations are represented on the Board.

In 2010 regular volunteers increased from 90 to 100. Volunteers contributed over 4,000 hours in the last year. Volunteers are involved in activities to support the Pantry seven days a week. They staff the five pantry shifts each week, collect food donations, stock the Pantry, do administrative and support work, assist at events, and process food drives.

Involving families who have been provided assistance is an important component of the “Neighbors Helping Neighbor” philosophy. There were four consumer volunteers in 2009. There is one consumer on the Board. Families bring clothing donations, and families have helped volunteers on an informal basis when they come to the Pantry.

The Pantry Coordinator works with the Board, committees, and volunteers to coordinate the activities of the Pantry. A paid staff person increases consistency and continuity for the program, even though it remains a 50% staff position.

The Pantry continues to demonstrate fiscal accountability and responsibility. Approximately half of all funds are used for direct service expenses. Fundraising efforts have increased cash flows to meet the increased community needs. Community need is projected to continue to increase so fundraising activities will remain at the same or an increased level.

Program Overview:

The Pantry is an outreach ministry of the North Liberty First United Methodist Church, but the service area and support are communitywide. The Pantry was created in 1985 as a response to requests from families in need in the community. Until 2004 the Pantry was a small project that served 15 to 20 families who asked for help each month. In response to a growing community and growing need, the Pantry was expanded in 2004 and has seen rapid growth as a result of three factors: increasing awareness of the Pantry, increasing population growth in

North Liberty, and increasing economic need. Strong leadership and commitment have been important to provide for the successful growth of the Pantry.

The Pantry is open to the public three days each week for a total of 12 hours. Families in the service area can come once a week during those hours to receive food and clothing. There are no restrictions on families who can receive food and clothing, with the exception of government commodities, which cannot be given to families above 185% of poverty. The Pantry has provided thoughtful and caring service to the families served and has consistently drawn praise from those families, as well as from groups and individuals who assist the Pantry.

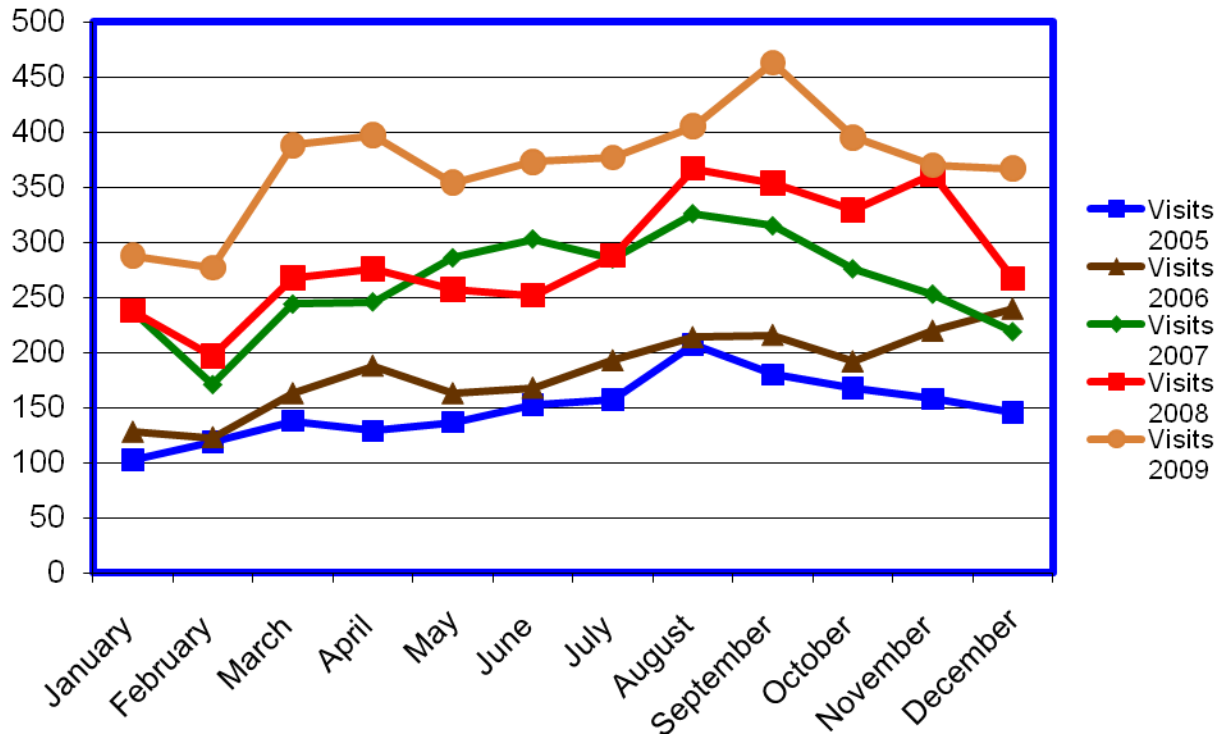
The Future Holds Increasing Challenges:

North Liberty is a rapidly growing community. U S Census figures show an increase from 5,367 residents in 2000 to 8,808 in 2005, and current estimates show the population at over 11,000. A substantial number of families are in economic need. Projections based on 2000 poverty statistics indicate that there over 1400 residents who are below 185% of poverty, a level of income of \$40,000 annually for a family of four. Our community is receiving new families with clear needs for food and clothing as are the communities adjacent to North Liberty.

North Liberty has affordable housing in the form of subsidized apartments and mobile homes. However, there is very little assistance for low-income families. The North Liberty Family Resource Center, a WIC representative, and the Pantry are the only organizations located in North Liberty that specifically serve low-income residents. All other services must be accessed in Iowa City. This situation is made particularly difficult by the very limited public transportation between the two cities. Many of the families who come to the Pantry do not have reliable transportation. Findings from the 2009 Family Survey data show that almost one-third (28%) of respondents indicated that they ride a bicycle or get a ride to the Pantry.

Pantry leadership is continuing to use goals stated in our five -year strategic plan to provide direction and establish priorities. The Pantry is working to serve all of the families who come to the Pantry with expressed needs for food and clothing while obtaining enough resources to be able to serve everyone well. In 2010 the Pantry will build on strengths to enlarge our capacity to serve through direct service and collaboration with our partners in the Hunger Project. Immediate actions are to: a) strengthen internal operations through volunteer development; b) increase long-term sustainability through building expansion and foundation formation; and c) incrementally increase staff time from 50% to 75%.

Visits to the Pantry



Cost of services

Service	2008	2009
Food costs per pound	\$0.10	\$0.10
Food costs per visit	\$2.69	\$2.82
Clothing costs per item	\$1.07	\$1.61
Total cost per visit	\$11.65	\$9.11
Total cost per family	\$95.22	\$80.06

Sources of funding

Source	2008	2009
Business Contributions	\$5,242.00	\$4,634.00
Church Contributions (salary)	\$6,670.65	\$7,019.20
Local Government Contributions	\$8,000.00	\$11,000.00
Grants	\$7,010.00	\$9,517.42
Group Contributions	\$6,042.10	\$1,975.00
Individual Contributions	\$8,057.09	\$16,300.46
Miscellaneous	\$31.00	\$195.65
Total	\$41,052.84	\$50,641.73

Expenditures

Expense	2008	2009
Architect	\$3,000.00	\$0.00
Clothing	\$8,554.82	\$4,647.42
Employment	\$306.58	\$430.00
Equipment Purchase	\$531.28	\$200.58
Equipment Rental	\$1,106.75	\$1,865.44
Food Supplies		
Food Retail	\$951.59	\$4,339.05
Food Wholesale	\$264.13	\$0.00
Food Bank	\$8,093.21	\$8,222.39
Fundraising Expense	\$958.88	\$233.37
Marketing	\$52.51	\$549.03
Office Supplies	\$813.94	\$342.09
Pantry Supplies	\$469.01	\$2,210.94
Postage and Delivery	\$47.58	\$188.60
Professional Fees	\$70.00	\$205.00
Salary	\$13,341.30	\$14,038.40
Stipend	\$500.00	\$500.00
Supplies - Building	\$0.00	\$1,304.23
Telephone	\$527.07	\$670.12
Training	\$70.00	\$0.00
Volunteer Support	\$619.64	\$641.88
Total	\$40,278.29	\$40,588.54